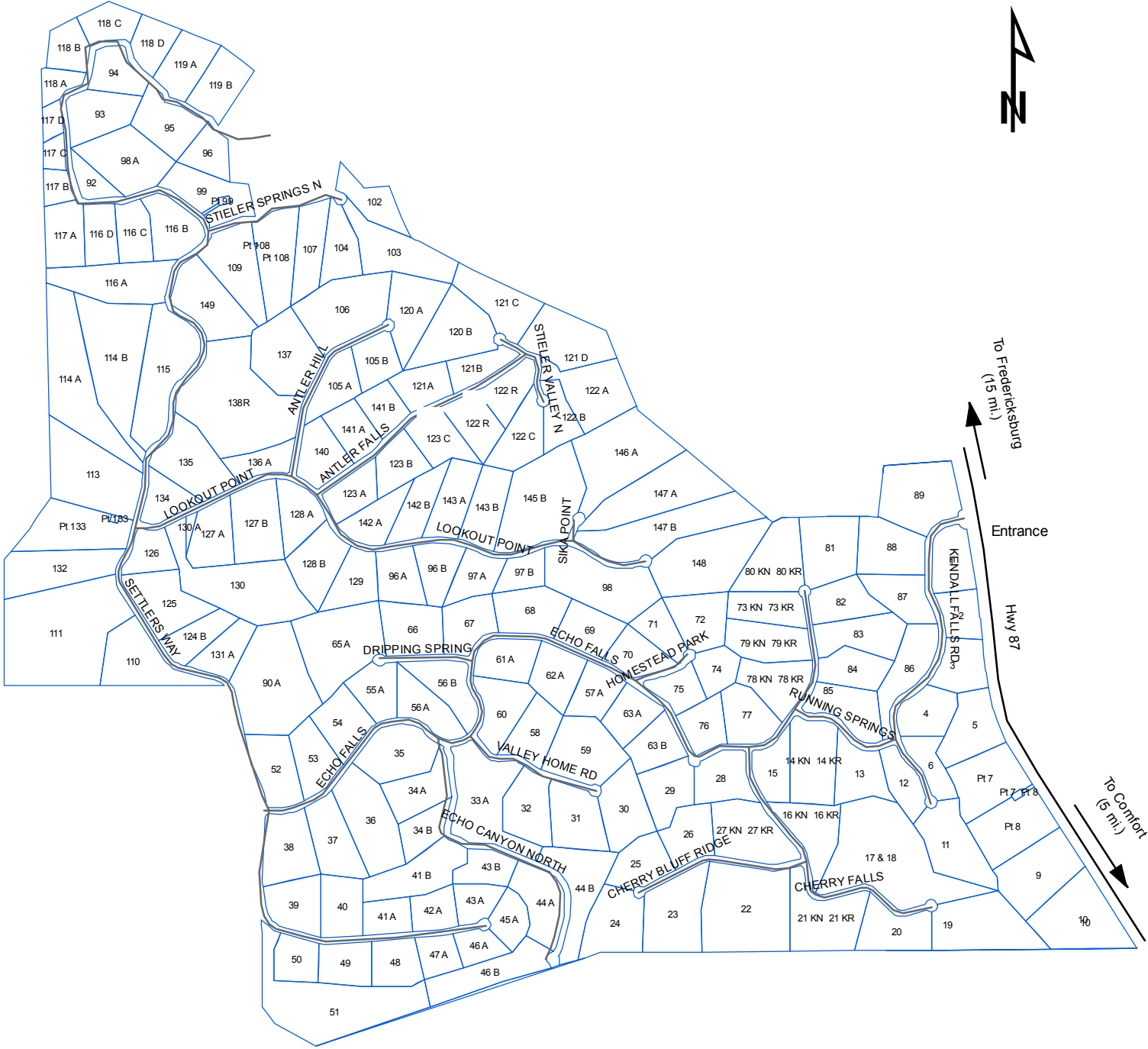


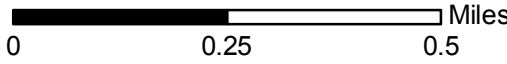
FALLING WATER



To Fredericksburg
(15 mi.)

Entrance
Hwy 87

To Comfort
(5 mi.)



Kendall Appraisal District makes no claims, guarantees, or promises about the accuracy or completeness of this data and explicitly disclaims accountability for any errors or omissions. Represented boundaries are approximate and should not be used for exact measurement or legal documentation.

Kendall Appraisal District